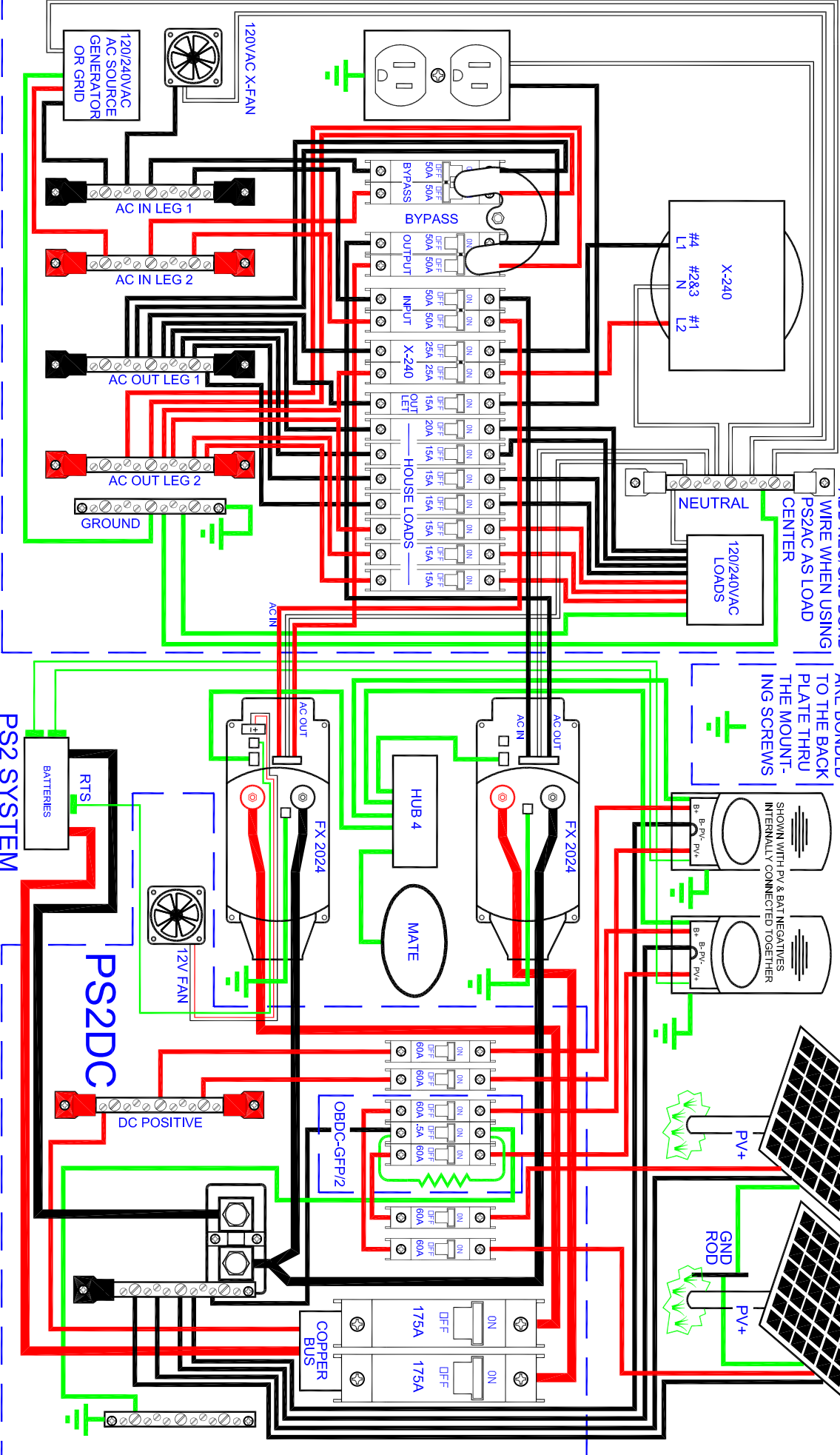


SHOWN ARE: FACTORY INSTALLED PARTS, OPTIONS AND USER INSTALLED PARTS.

PS2AC

MX60



ADD NEU/GND BOND WIRE WHEN USING PS2AC AS LOAD CENTER

ALL GND'S ARE BONDED TO THE BACK PLATE THRU THE MOUNTING SCREWS

SHOWN WITH PV & BAT NEGATIVES INTERNALLY CONNECTED TOGETHER

PS2 SYSTEM

PS2DC

DC POSITIVE

12V FAN

OBDG-GFP/2

COPPER BUS

175A

175A

60A

60A

60A

60A

60A

60A

60A

60A

60A

60A

60A

60A

60A

60A

60A